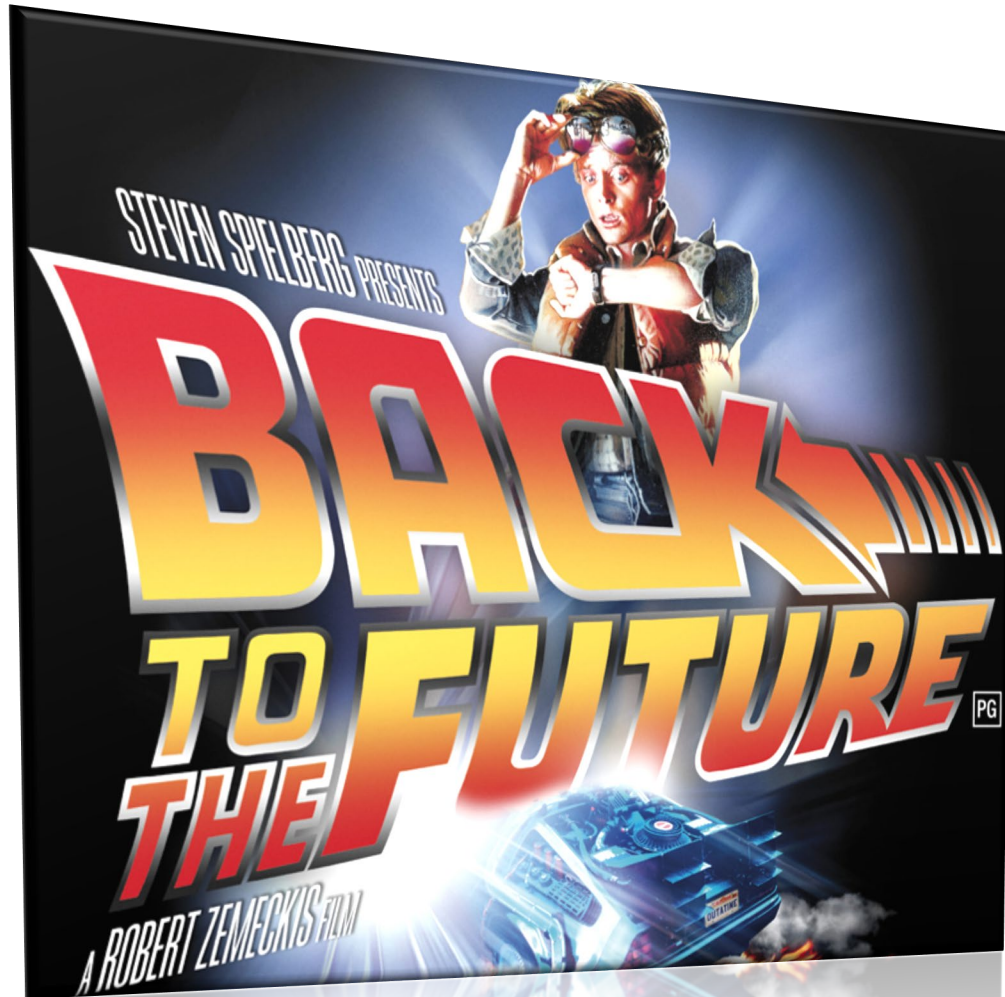


ParametriX



BACK TO THE FUTURE:

**COMPREHENSIVE
PLANNING AND
CLIMATE CHANGE**



APWA Spring 2024



INTRODUCTIONS

Tracy Lunsford,
Local Agency Practice Lead



Suzy Godber,
Resilience Planner

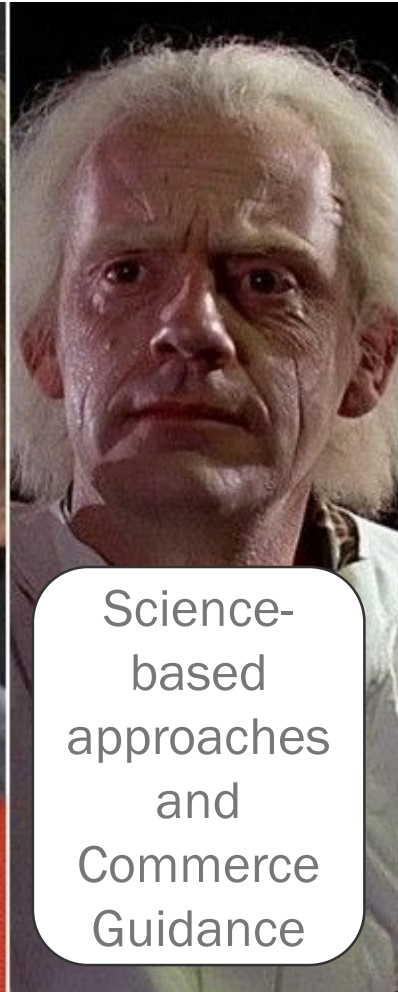




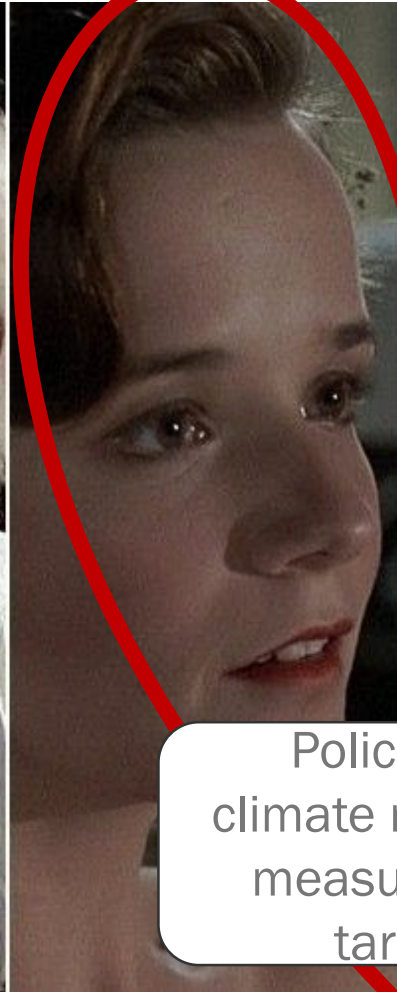
CAST OF CHARACTERS



You, the
Cities and
Counties of
WA



Science-
based
approaches
and
Commerce
Guidance



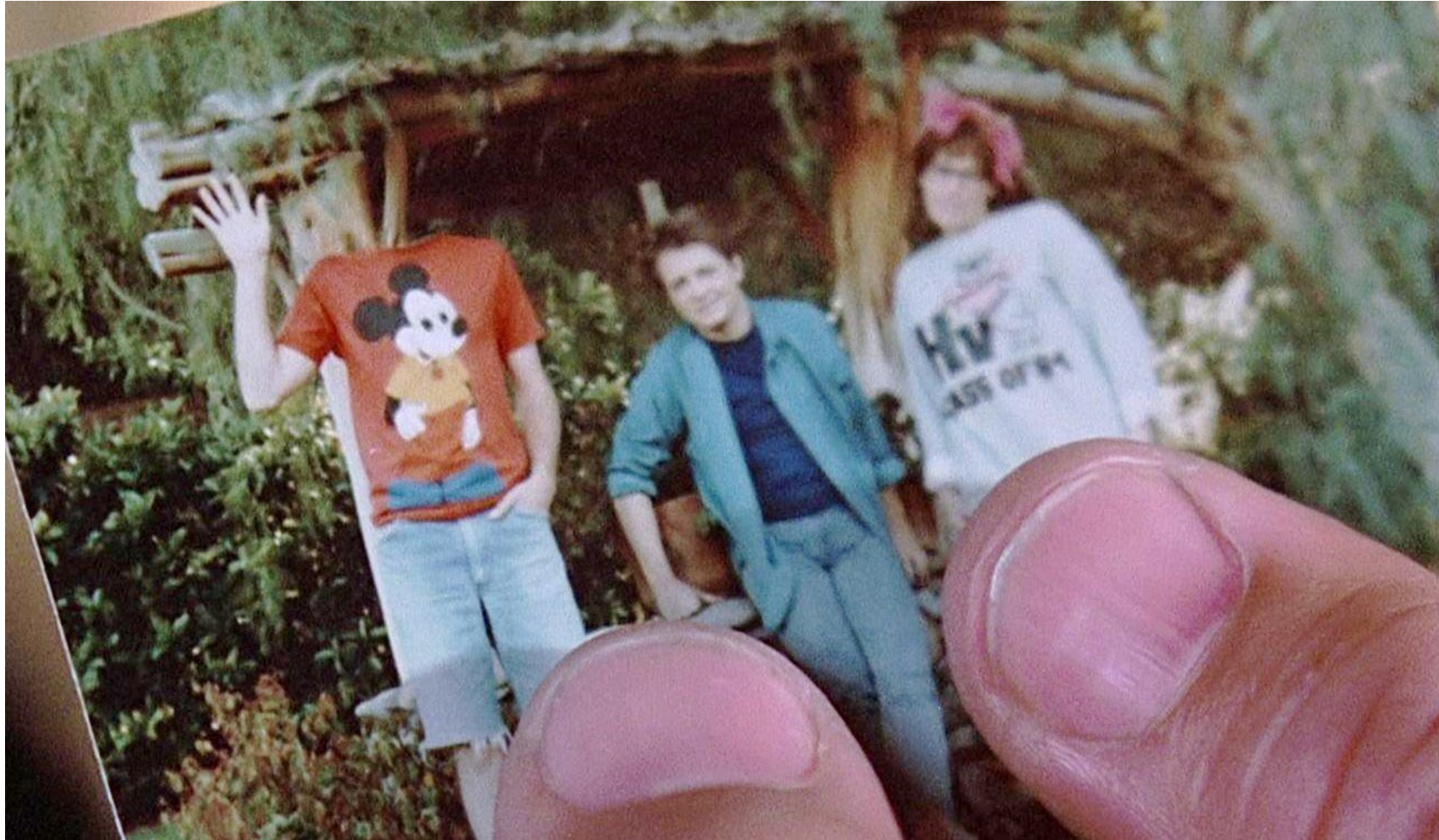
Policies for
climate mitigation
measures and
targets



Climate
risks and
hazards



GOAL – PROTECT THE FUTURE



SUMMARY OF CLIMATE ELEMENT

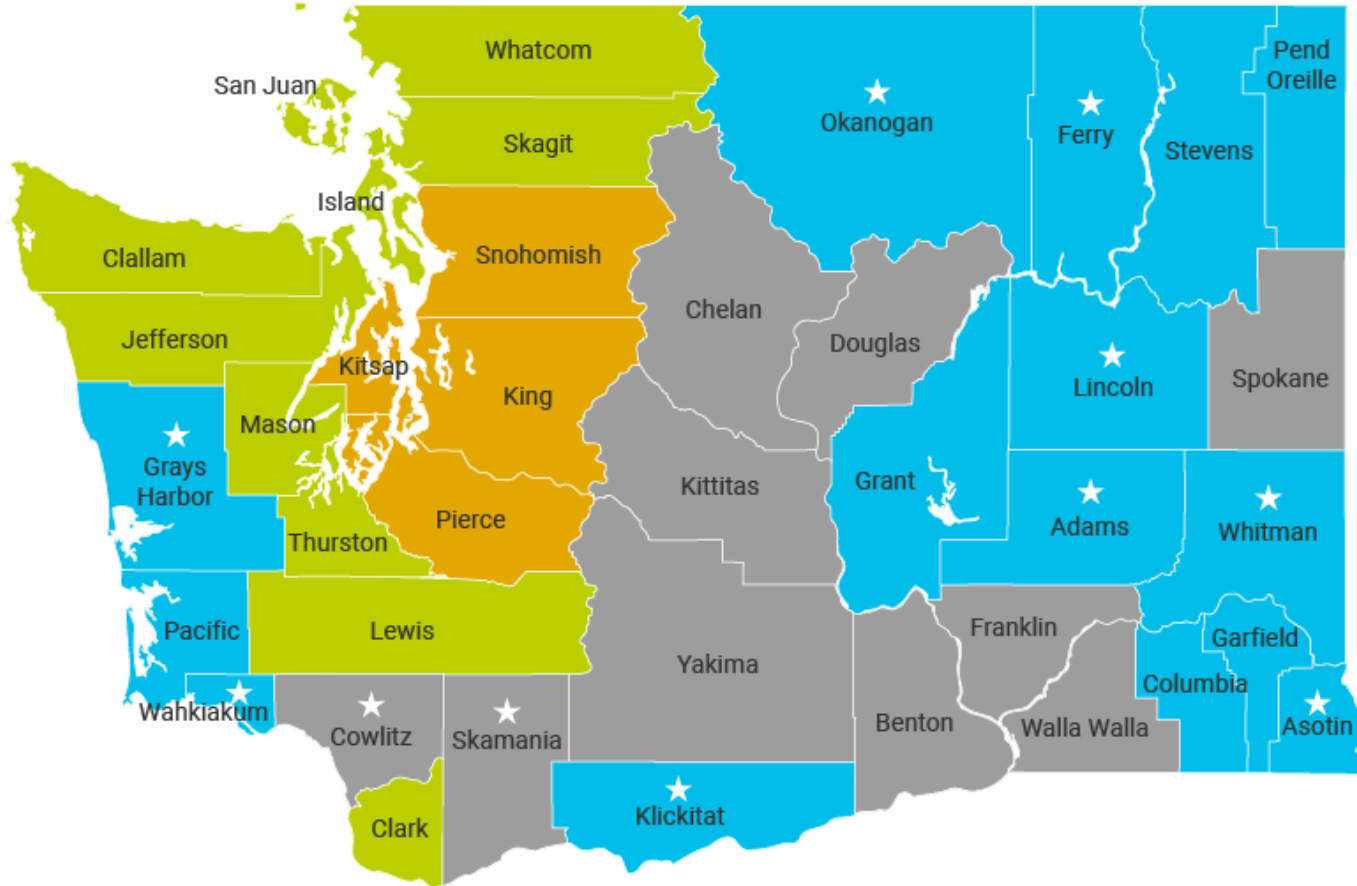
New requirement under the Growth Management Act





COMPREHENSIVE PLANS: CLIMATE ELEMENT

- Next iteration of comprehensive plans now need to include a **climate element**
- The State provides climate *planning* grants range from \$100,000 \$800,000 per jurisdiction
- We have helped our clients with grants

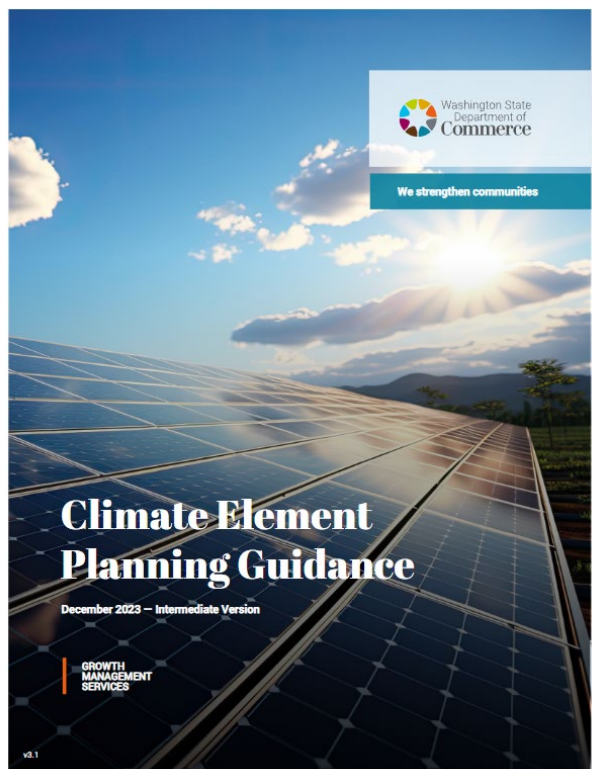


■ 2024 Due December 31st ■ 2025 Due June 30th ■ 2026 Due June 30th ■ 2027 Due June 30th

★ Starred counties are partially planning under the Growth Management Act



CLIMATE ELEMENT: COMMERCE GUIDANCE



- Procedural guidance
- Multiple pathways to meet your staff/community needs and capabilities
- Provides useful tools and data resources
- Templates/workbook

RESILIENCY SUB-ELEMENT

Required for all jurisdictions





RESILIENCY SUB-ELEMENT OVERVIEW

Figure 3: Steps and Pathways to Integrate Resilience into Comprehensive Plan





STEP 1: EXPLORE CLIMATE IMPACTS (REQUIRED)

What are the anticipated climate hazards that will impact your jurisdiction



Identify community assets



Explore Hazards and Changes in Climate



Pair Assets and Hazards and Describe Exposure and Consequences



Identify Priority Hazards



STEP 1: EXAMPLES OF ASSETS AND HAZARDS

ASSETS

- Social
 - Social services, public health and safety
- Economic
 - Major businesses, regional employment
- Environmental
 - Tree canopy, fish and wildlife, estuaries and riparian conservation
- Infrastructure
 - Buildings, roads, water infrastructure, hospitals, transportation systems

HAZARDS

- Increasing temperature
- Sea level rise
- Flooding
- Wildfires/wildfire smoke
- Extreme precipitation
- Landslides
- Reduced snowpack



STEP 2: AUDIT PLANS & POLICIES (REQUIRED)

How well do your existing plans and policies build climate resilience?



Audit plans: 3-5
(including comprehensive plan,
shoreline management plan,
and hazard mitigation plan)



Identify 20-40 collective
measures



Determine if there are enough
goals or if you need a
vulnerability assessment

STEP 3: ASSESS VULNERABILITY AND RISK (OPTIONAL)

If you do not have enough information to start choosing climate goals, you can conduct a vulnerability and risk assessment

Figure 6: Elements of climate vulnerability

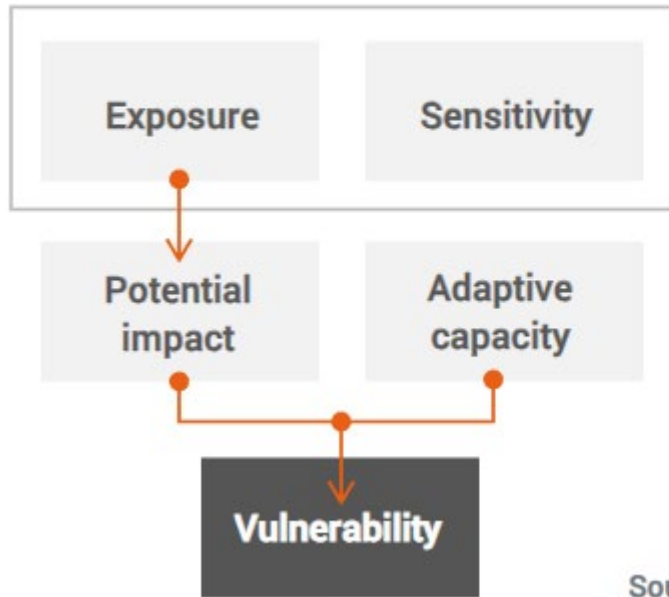
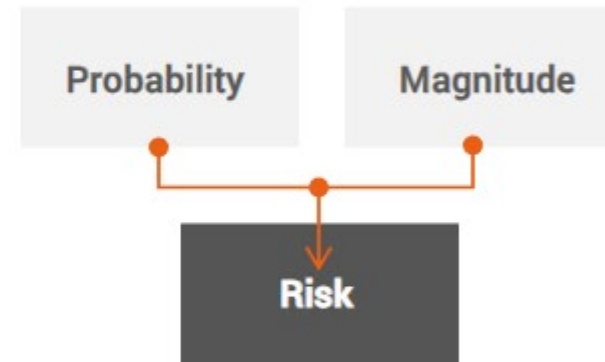


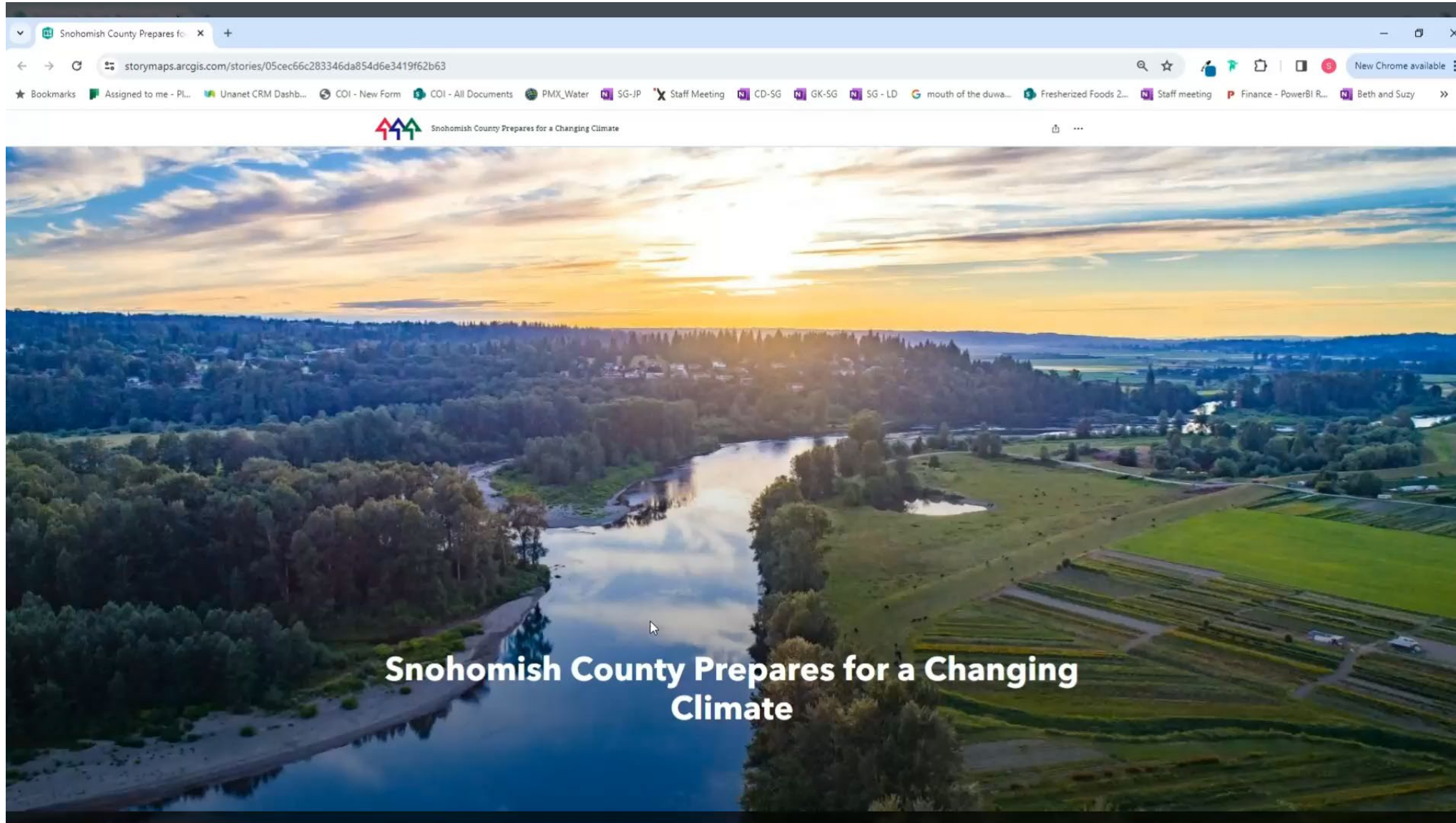
Figure 7: Elements of climate risk



Source: U.S. Climate Resilience Toolkit



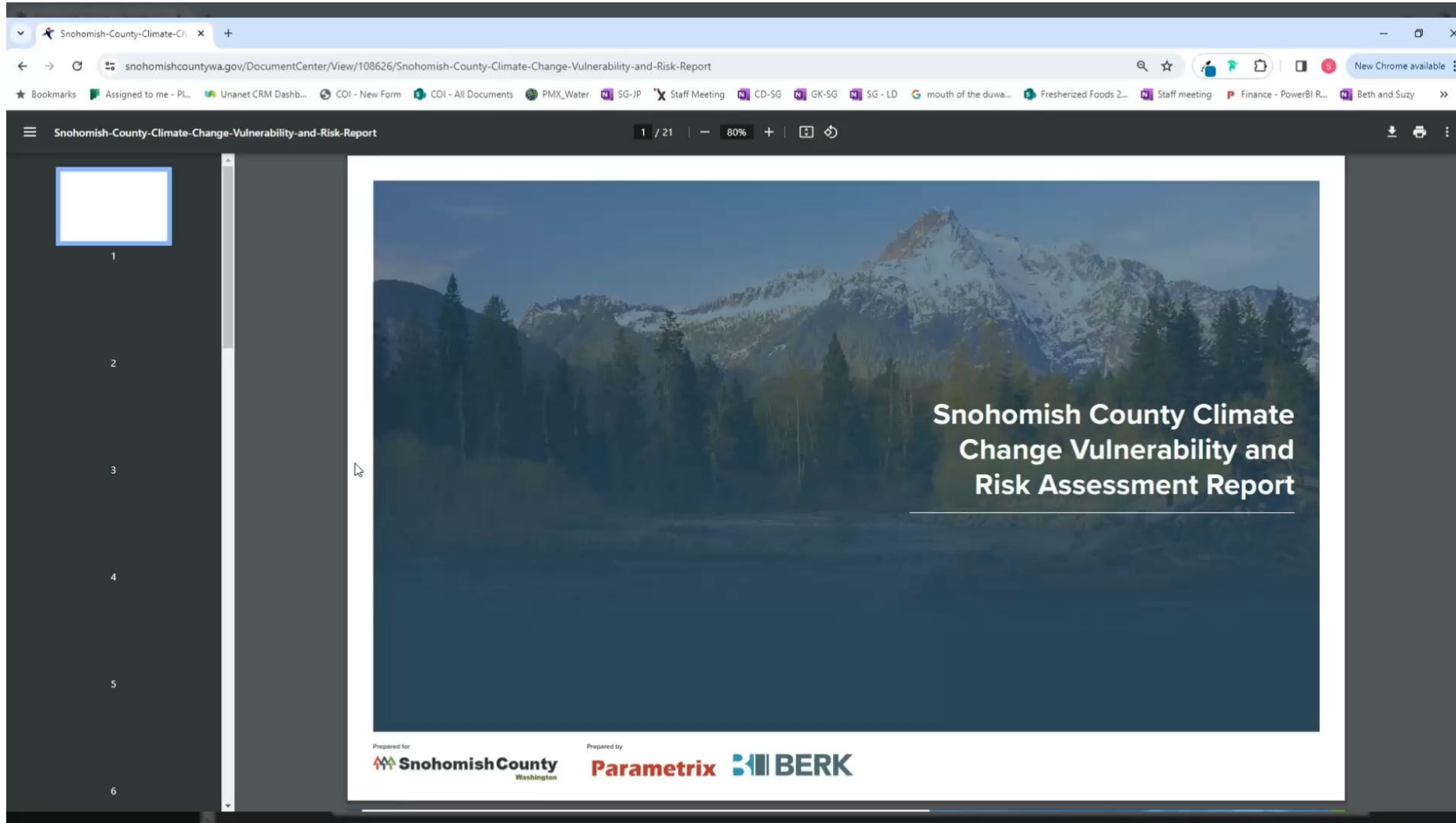
EXAMPLE: ASSESSING VULNERABILITY



Snohomish
County Climate
Vulnerability
Assessment



EXAMPLE: ASSESSING RISK



Snohomish County Risk Assessment

- Infrastructure
- Environment
- People
- Economy



STEP 4: IDENTIFY GOALS AND POLICIES

STEPS

- Develop **GOALS**
 - What risks do we want to reduce?
- Develop **POLICIES**
 - How will we reduce these risks
- Identify **CO-BENEFITS**
 - Multiple, compounding benefits of selected actions

EXAMPLES

- **GOALS**
 - Enhance urban green space; improve infrastructure resiliency; emergency preparedness and response
- **POLICIES**
 - Mandate street trees new development; require resiliency assessments; establish emergency management agency
- **CO-BENEFITS**
 - Reduces emissions; enhances resilience; improves salmon recovery; promotes economic development; promotes equity and justice



STEP 4: PURSUE PATHWAYS



Pathway 1: Select and/or adapt **EXISTING** goals and policies



Pathway 2: Develop **NEW** goals and policies



Pathway 3: Update and adopt **HAZARD MITIGATION PLAN**



STEP 5: INTEGRATE GOALS & POLICIES



- Review and finalize goals and policies
- Locate where each measure will be placed in comprehensive plan

GHG EMISSIONS REDUCTION SUB-ELEMENT

Mandatory for 11 counties and their cities over 6,000 population





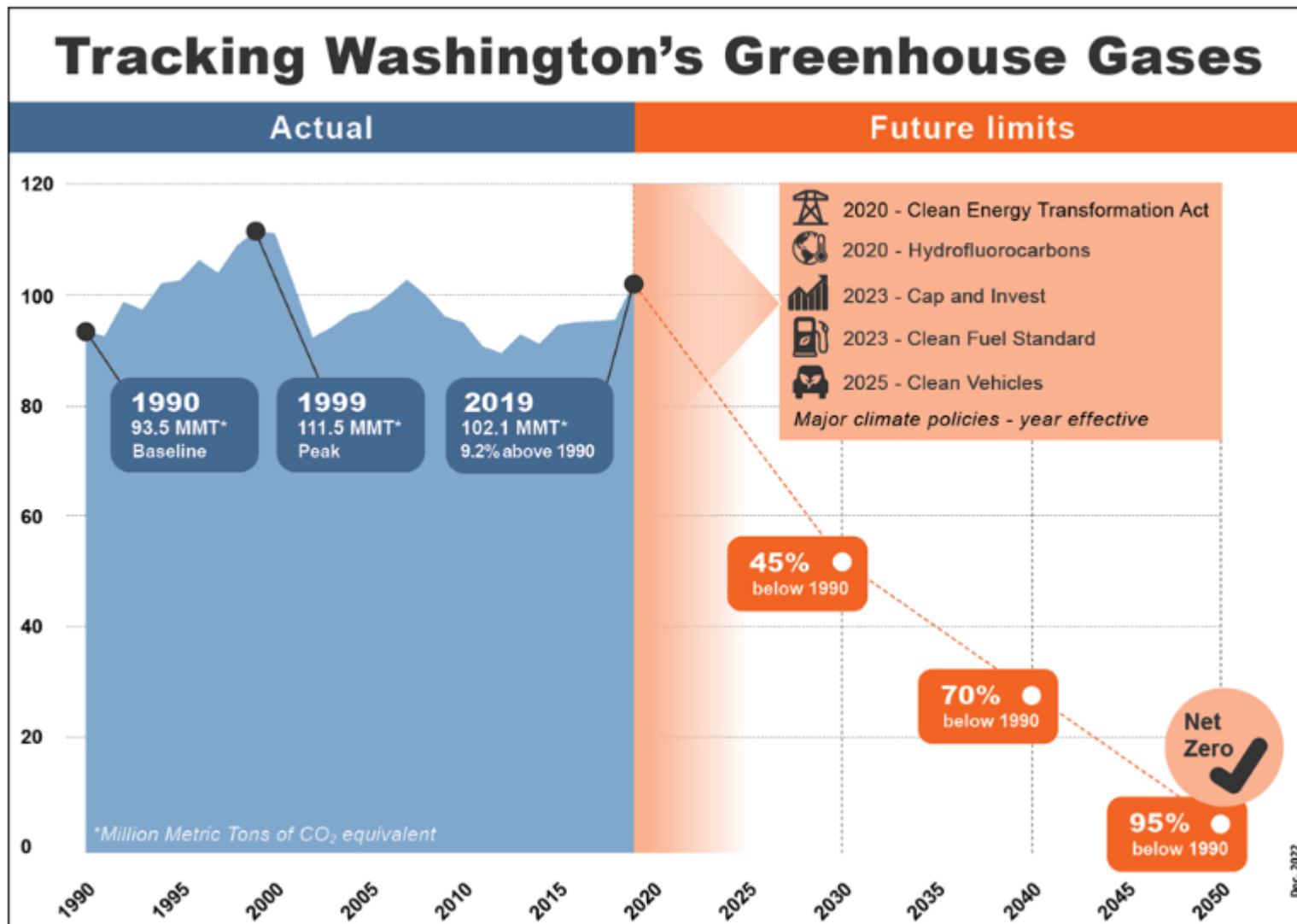
GHG REDUCTION SUB-ELEMENT



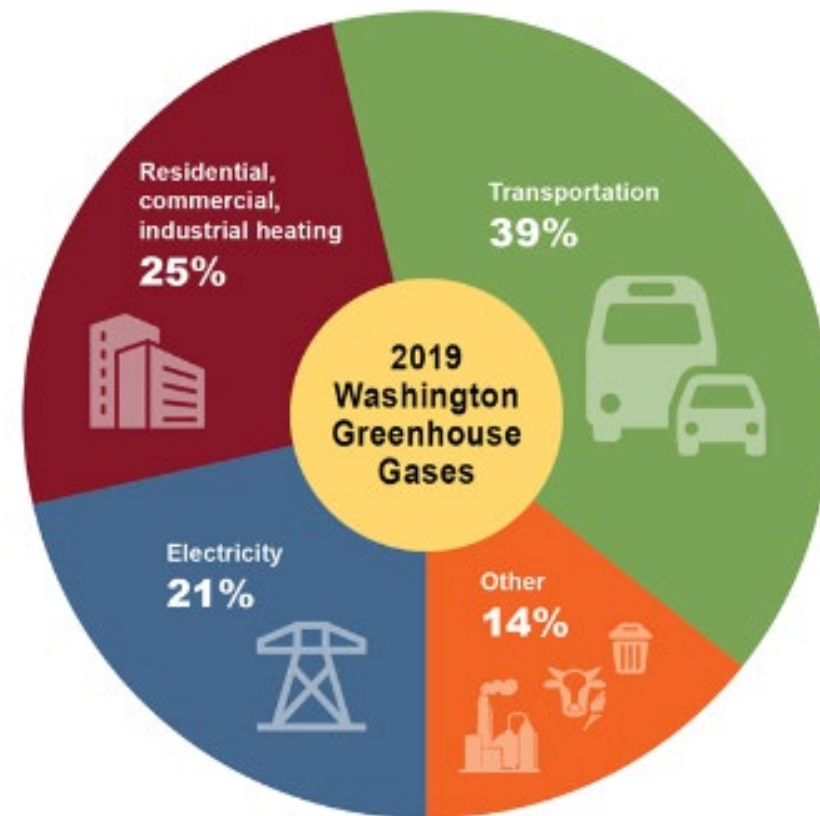
1. Community GHG Inventory
2. Set Mitigation Targets: Net-zero emissions by 2050
3. Mitigation Measures and Implementation Plan
4. Integrate into Plan and Evaluate Progress



STEP 1. GHG INVENTORY



Source: GHG inventories - Washington State Department of Ecology



2019 greenhouse gas sources, by sector



STEP 2. SET MITIGATION TARGETS



Net-Zero by 2050

- GHG mitigation measures and VMT reduction measures *cannot increase emissions elsewhere in Washington*
- Prioritize benefits to overburdened communities



STEP 3. MITIGATION MEASURES AND IMPLEMENTATION PLAN

Mitigation measures should include the following sectors at a minimum



Transportation



Buildings and Energy



Zoning and Development



STEP 4. INTEGRATE INTO PLAN AND EVALUATE PROGRESS



- Review existing plans and policies
- Legislative Action to implement any new policies, adopt climate measures
- Measure Progress

ENGAGEMENT

Early and continuous public participation is required



X ENGAGEMENT



- Make engagement accessible, effective and meaningful
- Emphasis on inclusion of overburdened communities
- Touch points
 - Resiliency
 - Climate Mitigation

HOW CAN YOU PREPARE



Don't let time run out...Plan ahead

- When are you scheduled
- Consider options
- Meet Commerce planning grant deadlines
- Consider support

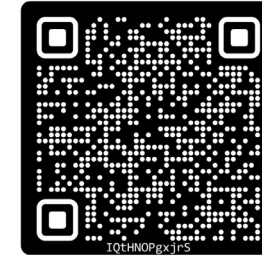
Parametrix



- Community Building
- Cultural Resources
- Environmental
- Funding & Grant Assistance
- Project Delivery
- Survey & Geospatial Services
- Sustainable Solutions
- Transportation
- Visualization
- Water



Tracy Lunsford,
Local Agency Practice Lead
trlunsford@parametrix.com



Suzy Godber,
Resilience Planner
sgodber@parametrix.com